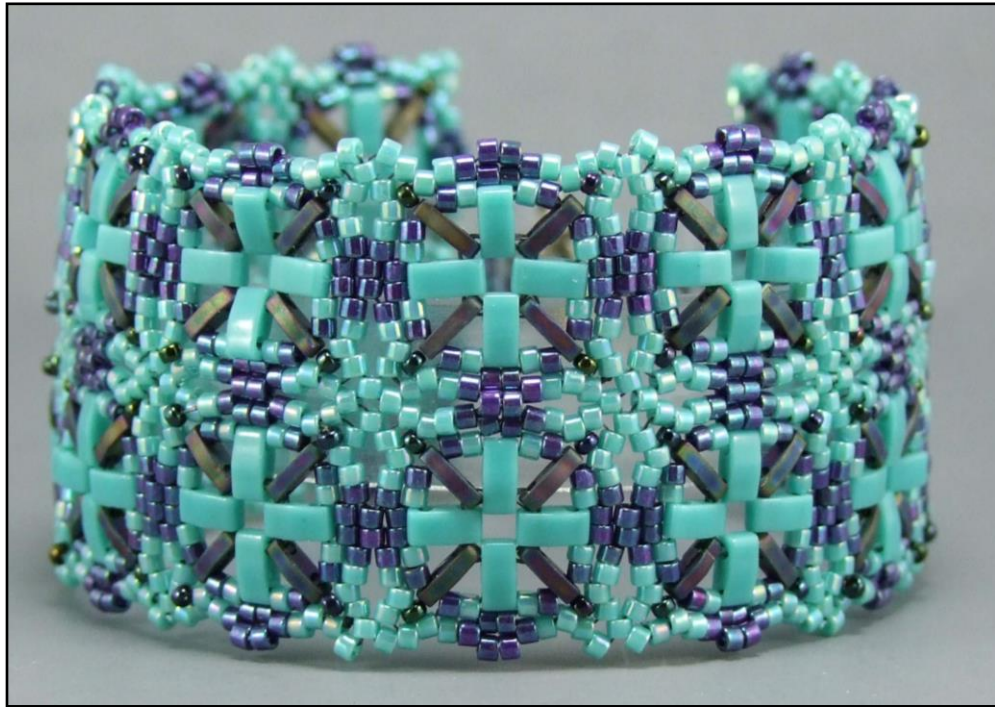


MOSAIC TILA BRACELET

By Carolyn Cave

www.ladybeadledesigns.com



This bracelet is not stitched one motif at a time. I'd rather not sew in 40 ends for a bracelet that has 20 little squares! So, I developed a method of continuous stitching whereby some beads are picked up that lead towards the center of the next square. As rounds are worked from the center outwards, these beads are simply stitched through, and not picked up as they were for the first square. It's not difficult and I'll show you how it's done.

Skill level: Intermediate

Techniques: Peyote, circular netting

Finished length: 6 ½ inches (16 cm) beadwork only

MATERIALS

1g size 15° seed beads

4g (80 pcs) half Tila beads

2g (80 pcs) quarter Tila beads

3g size 11 Delica beads, A (same color as the half Tilas)

4g size 11 Delica beads, B (same color as the quarter tilas)

Toggle clasp set

2 size 6mm jump rings

D weight beading thread

Size 10 or 12 beading needle

Scissors or thread cutters

Two pairs of pliers (for the jump rings)

Please respect my designs by not reselling or altering my patterns in any way. Do not replace or modify text, images, names, logos, or URLs. Feel free to recreate this design for personal use and limited sales but not for mass production.

Permission to teach this pattern is exclusive to customers of The BeadSmith.

©2022 MOSAIC TILA BRACELET by CAROLYN CAVE for the BEADSMITH

TIPS

- When Tilas were first made, it seemed to me that one side was a bit more rounded than the other. More recent Tilas appear to be the same on both sides. If you are using older stock you may wish to pay attention to this.
- The edges of the holes on Tila beads are sharp so pull the thread through the hole as straight as you can.
- Use the technique that you are most comfortable to end old thread and add new thread when needed.

DESIGN OPTIONS

- To make the bracelet longer or shorter, simply change the number of squares in the first row. Each square adjusts the length by 3/4 inch (1.8cm).
- The square motif could be used to make other projects, such as a matching pair of earrings, a pendant or even a necklace.
- If you don't have half Tilas, you could use two quarter Tilas next to each other (to equal one half Tila).

NOTE: If you view the bracelet vertically, stitching begins with the square in the upper left-hand corner.

Cut a long length of beading thread, one that you are comfortable using, and attach a needle to one end.

FIGURE 1

Step 1. Pick up four half Tilas (HTLs). Sew through all of the beads again to form a ring. Carefully slide the ring towards the end of the thread leaving a short tail of about 3 inches (7cm). Tie the two ends into a secure square knot. Sew through the first bead for a third time.

FIGURE 2

Step 2. Pick up one quarter Tila (QTL) and sew through the next HTL (using the same hole as the first round), four times. Sew again through the first QTL added. Change direction and sew through the second unused hole of the same QTL.

FIGURE 3

Step 3. Pick up one color B Delica (DB-B) and one color A Delica (DB-A). Sew through the unused hole of the next HTL. Pick up one DB-A and one DB-B. Sew through the unused hole of the next QTL (**green thread**)

Step 4. Repeat the **green thread** path three more times. To be in the correct place to start the next round, sew again through the first DB-B and DB-A added in this round (**pink thread**).

FIGURE 4

Step 5. Pick up two DB-Bs and sew through the next DB-A and DB-B. Pick up one DB-A, one 15° and one DB-A. Sew through the next DB-B and DB-A (**blue thread**).

Step 6. Repeat the **blue thread** path three more times. To be in the correct place to start the next round, sew again through the first two DB-Bs picked up in this round (**orange thread**).

FIGURE 5

Step 7. Pick up one DB-B and one DB-A. Sew through the next DB-A. Pick up two DB-As and sew through the next DB-A which will be around the corner. Pick up one DB-A and one DB-B. Sew through the next two DB-Bs (**pink thread**).

Step 8. Repeat the **pink thread** path three more times. To be in the correct place to start the next round, sew again through the first DB-B and DB-A picked up in this round, DB-A from the previous round and next DB-A (**blue thread**).

FIGURE 6

Step 9. Pick up two DB-As. Turn the corner and sew through the next three DB-As and one DB-B. Pick up two DB-Bs. Sew through the next DB-B and three DB-As (**blue thread**).

Step 10. Repeat the **blue thread** path two more times. In the third repeat, pick up only one DB-A to start. The rest of the section remains the same. **NOTE:** This single DB-A will be the upper left corner of the bracelet. To be in the correct place to start the next round, sew again through the first two DB-As picked up in this round (**red thread**).

FIGURE 7

Step 11. Sew along the outer round of beads, through three DB-As and three DB-Bs. Pick up two DB-Bs. Sew again through the last two DB-Bs sewn through on the square (the two that are protruding) and the two DB-Bs just picked up. Pull the thread snug. Pick up one DB-A, one DB-B and one QTL. Change direction and sew through the second hole of the QTL. Pull the thread snug.

NOTE: The beads picked up in the following steps (Figures 8 to 15), shown in **orange**, are the beads that will lead to the center so you can begin stitching the rounds of the second square.

FIGURE 8

Step 12. Pick up four HTLs. Sew through the first two again. Pull the thread snug.

FIGURE 9

Step 13. Pick up one QTL and sew through the next HTL (using the same hole as the first round), twice. Sew through the QTL already in place and the next HTL. Make sure you sew through this QTL in the same thread direction. It is the side where you see the thread along the face of the bead.

Step 14. Pick up one QTL and sew through the next HTL. Sew again through the beads used in this round until the thread passes through the QTL added in Step 11 (Fig. 7). Change direction and sew through the other hole of the QTL. Check to make sure the thread is running along both sides of the same QTL.

FIGURE 10

Step 15. Pick up one DB-B and one DB-A. Sew through the unused hole of the next HTL. Pick up one DB-A and one DB-B. Sew through the unused hole of the next QTL (**green thread**).

Step 16. Repeat the **green thread** path two more times. Pick up one DB-B and one DB-A. Sew through the next HTL, DB-A, DB-B and QTL picked up in Step 11 (Fig. 7), plus the first DB-B and DB-A picked up in this round (**pink thread**).

FIGURE 11

Step 17. Pick up two DB-Bs and sew through the next DB-A and DB-B. Pick up one DB-A, one 15° and one DB-A. Sew through the next DB-B and DB-A (**blue thread**).

Step 18. Repeat the **blue thread** path two more times. Sew through the two DB-Bs, DB-A and DB-B picked up in Step 11 (Fig. 7). Pick up one DB-A, one 15° and one DB-A. Sew through the next DB-B and DB-A, plus the first two DB-Bs picked up in this round (**orange thread**).

FIGURE 12

Step 19. Pick up one DB-B and one DB-A. Sew through the next DB-A. Pick up two DB-As and sew through the next DB-A which will be around the corner. Pick up one DB-A and one DB-B. Sew through the next two DB-Bs (**pink thread**).

Step 20. Repeat the **pink thread** path once. On the next repeat, the two DB-Bs sewn through at the end of the step will be the ones added in Step 11 (Fig. 7). Repeat the **pink thread** for a third time. To be in the correct place to start the next round, sew through the DB-B and DB-A picked up in this round, the DB-A from the previous round and next DB-A (**blue thread**).

FIGURE 13

Step 21. Pick up two DB-As. Turn the corner and sew through the next three DB-As and one DB-B. Pick up two Bs. Sew through the next DB-B and three DB-As (**blue thread**).

Step 22. Repeat the **blue thread** path once more. Pick up one DB-A. Sew through the DB-A in the corner of the square above, the next three DB-As, DB-B, two DB-Bs on the square above, DB-B and three DB-As. Continue through the DB-A in the corner above. Pick up one DB-A. Sew through the next three DB-As and one DB-B. Pick up two DB-Bs. Sew through the next DB-B and three DB-As, plus the two DB-As added in this round (**red thread**).

FIGURE 14

Step 23. Repeat Steps 11 through 22 (Figs. 7-13) to add more squares to the length of the bracelet. When the bracelet is as long as it needs to be, the last repeat of Steps 21 (13) will be slightly different:

Step 24. Pick up **one** DB-A and sew through the next three DB-As and one DB-B. Pick up two DB-Bs and sew through the next DB-B and three DB-As (**blue thread**). Continue the rest of the (**red thread**). Sew through the beads of this round to exit the first pair of DB-Bs added Step 21 (Fig. 13) (**orange thread**).

Step 25. Turn the bracelet 90 degrees clockwise so the length is now horizontal and the thread is exiting the lower left hand side of the work. Repeat Steps 11 through 20 (Figs. 7-12).

NOTE: The last round (Steps 21 and 22 [Fig. 13]) will be different, in order to join it to the previous square, make a corner and add a clasp loop:

FIGURE 15

Step 26. Pick up one DB-A and sew through the next three DB-As and one DB-B. Pick up two DB-Bs and sew through the next DB-B and three DB-As (**blue thread**). Pick up two DB-As and sew through the next three DB-As and one DB-B. Pick up two DB-Bs and sew through the next DB-B and three DB-As (**red thread**). Pick up one DB-A and sew through the DB-A in the corner of the square above, the next three DB-As, DB-B, two DB-Bs from the square above, DB-B and four DB-As (**green thread**).

Step 27 - Loop for the clasp. Pick up one DB-A, four DB-Bs and sew through the other corner bead of the last square along the long side. Pick up one DB-B and sew through the DB-A and first DB-B just picked up. Pull the thread snug. Pick up one 15° and sew through two DB-Bs. Pick up one 15° and sew through one DB-B. Follow the thread path through the DB-A on the last square along the long side, DB-B and DB-A. Sew through the DB-A on the current square that is in the corner (**pink thread**).

Step 28. Sew through the next two DB-As and one DB-B. Pick up two DB-Bs and sew through the next DB-B and three DB-As, plus the corner DB-A picked up in this round (**red thread**). Sew through the beads of the outside round along one side and then half-way around the next side, exiting through two DB-Bs on the next side (**orange thread**). Turn the bracelet 90 degrees clockwise so the square just completed is at the top and the row of squares is to the right, sitting vertically.

Step 29. Repeat Steps 11 through 20 (Figs. 7-12) to start and nearly finish the next square.

NOTE: The last round (Steps 21 and 22 [Fig. 13]) will be different, in order to join it to two previous squares:

FIGURE 16

Step 30. Pick up two DB-As and sew through the next three DB-As and one DB-B. Pick up two DB-Bs and sew through the next DB-B and three DB-As (**blue thread**).

Step 31. Pick up one DB-A and sew through the corner of the square beside the current one. Continue through three DB-As, one DB-B, two DB-Bs of the adjacent square, one DB-B, three DB-As, one DB-A in the corner of the square beside, one DB-A in the corner of the square above, three DB-As, one DB-B, two DB-Bs of the adjacent square, one DB-B, three DB-As, and one DB-A in the corner of the square above (**red thread**).

Step 32. Pick up one DB-A and sew through the next three DB-As and one DB-B. Pick up two DB-Bs and sew through the next DB-B, three DB-As and two DB-As picked up in this round (**green thread**).

Step 33. Repeat Steps 30 through 32 (Fig. 16) until the number of squares are the same on both sides of the bracelet. **NOTE:** Don't forget to put only one DB-A into the lower left corner on the last square.

Step 34. Once the last square is finished, sew around it to the middle of the short end to add a clasp loop (refer to Step 27 [Fig. 15, **pink thread**]) to the other end of the bracelet.

Step 35. Open one jump ring using two pairs of pliers. Slip the open jump ring into the clasp loop on one end of the bracelet. Add one half of the toggle and close the jump ring. Repeat with the second jump ring and the remaining half of the toggle on the other end of the bracelet.

Your new bracelet is ready to wear!

MOSAIC TILA BRACELET ILLUSTRATIONS by CAROLYN CAVE

-  half tila bead
-  quarter tila bead
-  size 11/0 Delica, A
-  size 11/0 Delica, B
-  size 15/0 rocaille

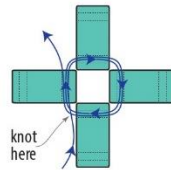


Figure 1

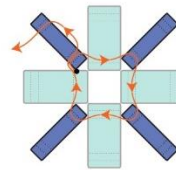


Figure 2

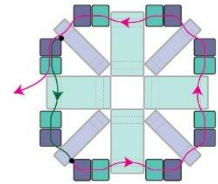


Figure 3

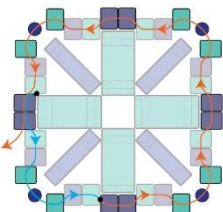


Figure 4

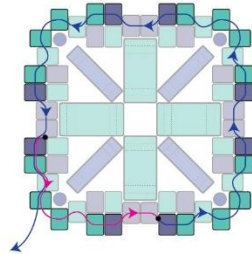


Figure 5

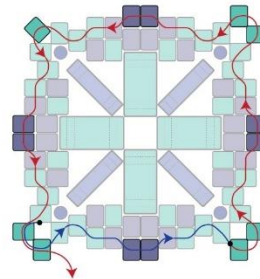


Figure 6

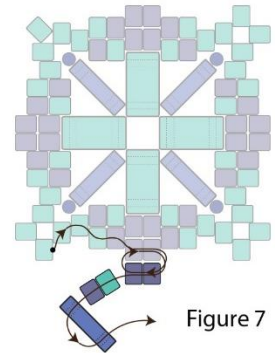


Figure 7

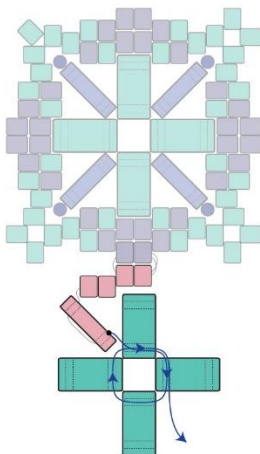


Figure 8

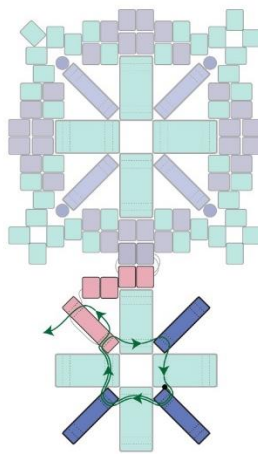


Figure 9

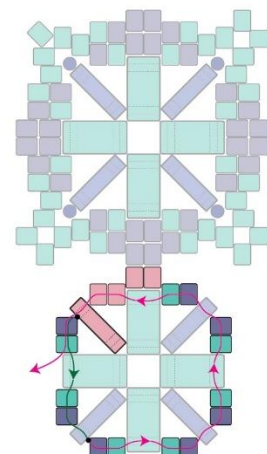


Figure 10

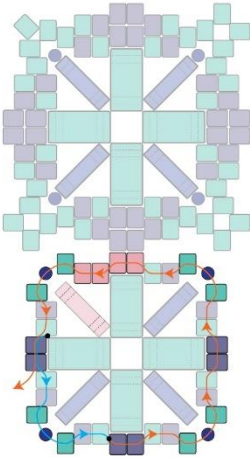


Figure 11

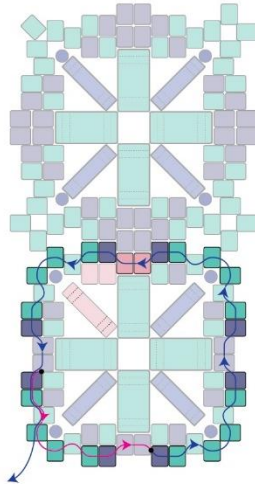


Figure 12

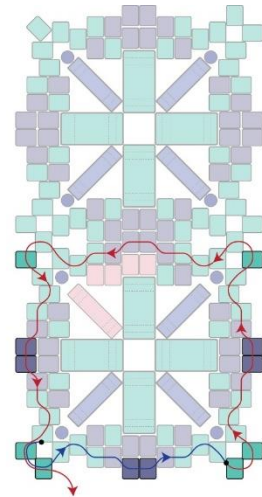


Figure 13

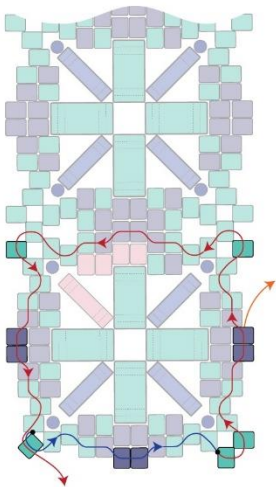


Figure 14

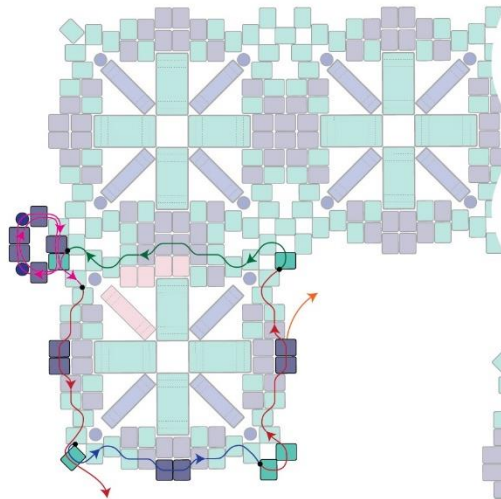


Figure 15

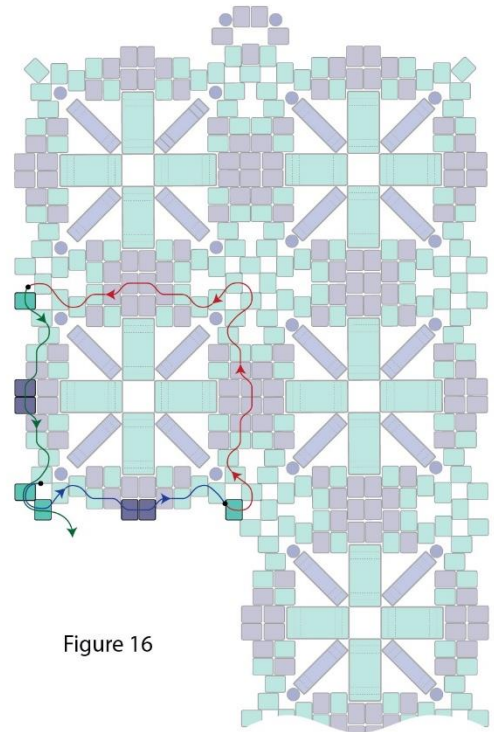


Figure 16